

# FIBER OPTICS FOR SALE CO.

## FOFS LYNX CLEAVER

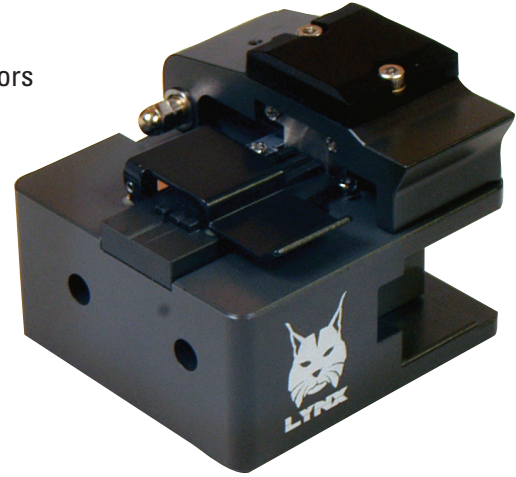
### Features

- Compact Ergonomic Design
- High Precision Cleaves
- 250um Coated or 900um Buffer fiber
- Singlemode or Multimode Use
- 16 Position Rotatable and Replicable Blade
- Fiber Disposal Bin Included

### Applications

- Fusion Splicing
- Mechanical Splicing
- Quick Termination Connectors

The FOFS LYNX Fiber Optic Cleaver gives you high precision at low cost. This compact and easy to use cleaver is perfect for all cleaving applications, from fusion splicing to mechanical splicing and field installing quick termination connectors. The LYNX works with both 250um coated and 900um buffered fibers. The LYNX comes with a fiber disposal bin with lid. A handy metal work tray with adjustable LED light is also available.



## SPECIFICATIONS

<b>Fiber Diameter</b>	125um
<b>Coating Diameter</b>	250um ~ 900um
<b>Cleave Angle</b>	90° ± 0.5°
<b>Cleave Length</b>	5 ~ 20mm
<b>Blade Life Time</b>	48,000 cleaves (3,000 per blade position)
<b>Cleaver Dimensions</b>	58 x 55 x 48mm (without fiber bin attached)
<b>Weight</b>	360g (without fiber bin attached)